



Single Phase Motors from 1/4 HP to 1 1/2 HP

- High Torque at Low Speed
- Closed Loop Speed Control
- Compact Integrated Package
- Virtually no RFI/EMI
- GFCI Compatible
- High Power Factor



56 Frame Fined
Aluminum Shell



48 Frame Steel Shell

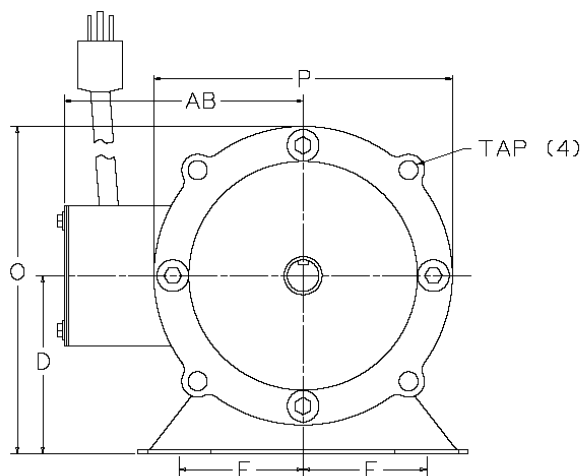
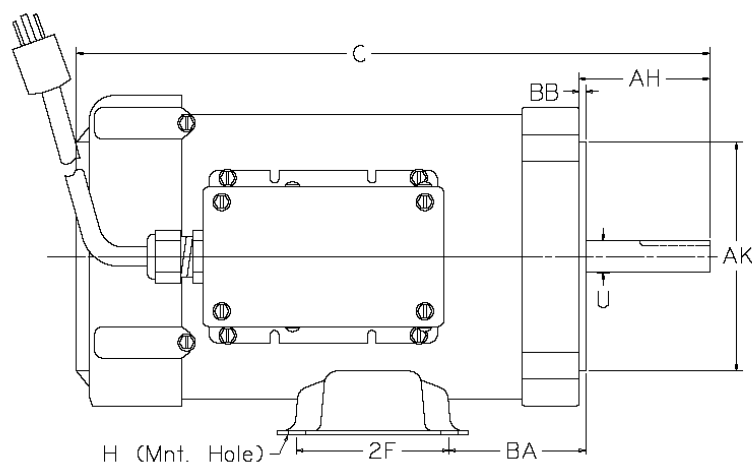
The DynaMotor is a patented, AC Brushless motor with high-torque capacity and variable speed control by means of LED arrays controlling solid state switches embedded in the rotor. It provides an integrated motor and drive system.

HP ¹	Sp. Range / Poles	Frame Size	F.L. Amps 115v / 230v	F.L. Power Factor	Efficiency %	Notes
1/4	800-4800/2	48	3.9 / 2.0	.58	72	
1/4	400-2400/4	48	3.9 / 2.0	.58	71	
1/3	800-4800/2	48	4.4 / 2.2	.67	73	
1/3	400-2400/4	48	4.4 / 2.2	.67	72	
1/2	800-4800/2	48	5.6 / 2.8	.78	74	
1/2	400-2400/4	48	6.0 / 3.0	.76	71	
3/4	800-4800/2	48	9.2 / 4.6	.80	66	2
3/4	400-2400/4	48	9.3 / 4.7	.83	64	2
1/2	800-4800/2	56	6.2 / 3.1	.77	68	
1/2	400-2400/4	56	6.4 / 3.2	.77	66	
1/2	200-1200/8	56	8.0 / 4.0	.67	64	
3/4	800-4800/2	56	9.3 / 4.7	.70	75	
3/4	400-2400/4	56	9.4 / 4.7	.71	73	
3/4	200-1200/8	56	11.3 / 5.7	.72	60	
1	800-4800/2	56	11.1 / 5.6	.79	74	
1	400-2400/4	56	11.1 / 5.6	.81	72	
1 1/2	800-4800/2	56	15.3 / 7.7	.84	76	2
1 1/2	400-2400/4	56	15.7 / 7.9	.84	74	2

1. Data for TEFC only, contact factory for TENV data. 2. Non-continuous Duty Cycle.

Speed Precision: 1% Nominal
Rotation: Reversing
Supply Voltage: 115 or 230 \pm 10% Vac nominal
 (reconnectable), Single Phase, 50/60 Hz
Duty Cycle: Continuous (see notes)
Service factor: 1.0 (consult factory for other service factors)
Overload: 150% for one minute
Maximum Ground Current: 2mA
Enclosure: TEFC, TENV
Mounting: C face, foot
Maximum Ambient Temperature: 40°C (104°F)
Insulation Class: F
Encoder provisions: Not required, built-in speed feedback
Lead termination: Terminal Blocks
Bearings: Ball

Drive end shaft slinger: Optional
Speed control: 0-10V DC, Potentiometer, serial communication with Windows™ GUI.
Digital Inputs: Eight, optically isolated, 5V, sink or source including Run Forward, Run Reverse, Jog Forward, Jog Reverse, E-Stop, Select Preset Speed
Integral control (optional): On/Off, Forward/Off/Reverse, Speed Potentiometer, Speed Selector Switch
User Configurable Parameters: Maximum Speed, Minimum Speed, Ramp Rate, Braking Torque, Current Limit, Define Preset Speeds
Tuning Parameters: Proportional and Integral Gains.
Protections: Over Current, Over Speed, Stall, Over Temperature
Agency Listing: U.L.



Frame Size	C	D	E	2F	H	O	P	U	AB	AH	AK	BA	BB	Key	TAP
48	11.75	3.0	2.13	2.75	.34 SLOT	6.18	6.34	.500	4.70	1.69		2.38		FLAT	None
56	15.12	3.5	2.44	3.00	.34 SLOT	6.84	6.68	.625	5.28	2.06	4.50	2.75	.13	3/16	3/8-16

Weight: 48 Frame: 22 lbs.
 56 Frame: 40 lbs.

www.dynamotors.com

DynaMotors, Inc.
 4945B Pointe Parkway, Cleveland, OH 44128
 Phone: (216) 292-7278, Fax: (216) 292-7288

PRELIMINARY

 Copyright © 2009 DynaMotors, Inc., All Rights Reserved